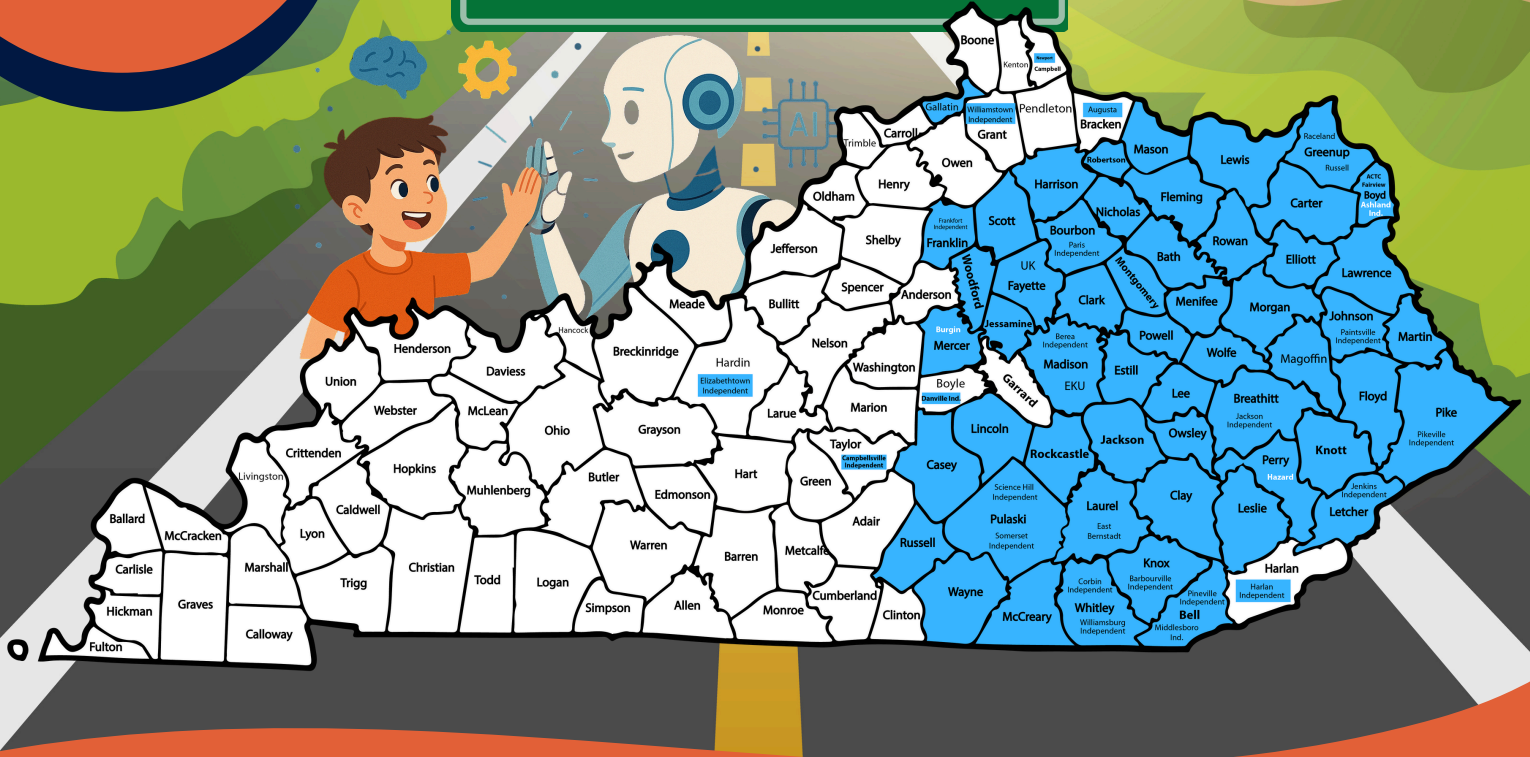


AI LAB EXPERIENCES 2025-2026

KEDC
Kentucky Educational Development Corporation

THE FUTURE IS NOW



Bringing AI to Life: The Mobile AI Lab Adventure for Schools

Meet the Autonomous Robot from Unitree Robotics

Kentucky Educational Development Corporation is thrilled to unveil our Mobile AI Lab, a dynamic, state-of-the-art initiative that brings artificial intelligence directly to students in school districts throughout the academic year. This traveling lab is more than a mobile classroom, it's a fully immersive experience designed to engage students with the future of technology in a hands-on, interactive environment. With AI shaping industries worldwide, our goal is to help students see its real-world applications and spark their imaginations for what's possible.

The future isn't just digital - it's walking among us. Our lab features a 4-foot-tall humanoid robot from Unitree Robotics, a global leader in robotic innovation. This robot can walk, balance, and perform various tasks completely autonomously, thanks to its sophisticated onboard AI. Students will get to interact with the robot, watch it problem-solve, and learn how machine learning allows it to adapt to its environment. Whether it's picking up objects or navigating around obstacles, the robot demonstrates how AI can empower machines to operate without human input - something that's already reshaping industries from logistics to healthcare.

Step into the AI-Powered Dome

At the heart of our mobile lab is an immersive experience provided by a mobile projector dome from Fulldome.pro. This dome transforms any space into a breathtaking 360-degree environment where students can explore AI-narrated stories customized to their age group. Whether it's a cosmic journey through the solar system or a deep dive into the planet's oceans, students are surrounded by vivid imagery and engaging content. The narration - powered by AI voice synthesis - brings the experience to life, combining cutting-edge visual technology with interactive storytelling. It's not just a show - it's an experience that fosters both curiosity and critical thinking.

AI Meets Meteorology: Powered by Hall Enterprises, LLC

In a groundbreaking collaboration with Hall Enterprises, LLC, founded by a professional meteorologist and YouTube personality with over 2.73 million subscribers, students will learn how AI is transforming the science of weather prediction. This module features a 1-meter digital globe displaying live weather data, both local and global, accompanied by an interactive AI-powered avatar. Students will explore how algorithms process satellite imagery, analyze atmospheric patterns, and deliver forecasts faster and more accurately than ever before. It's an eye-opening look at how AI is helping scientists and meteorologists make sense of the natural world - and it's presented in a way that's accessible and exciting for young learners.

Hands-On with Industry Simulators

Next up is our simulation zone, where students can try out two full-scale professional simulators: one for flight, and one for racing. These aren't just video games - they're high-end systems used for professional training in aviation and motorsports. Students can experience what it's like to be a pilot or a race car driver, complete with haptic feedback for full physical immersion. These simulators offer a thrilling way to explore how AI is used in real-time systems - from managing cockpit functions to analyzing driving data and improving performance in high-stakes environments.

Inspiring the Next Generation of Innovators

The Mobile AI Lab is more than an educational program - it's a movement to inspire the next generation of thinkers, creators, and problem solvers. By bringing AI directly to schools, we're helping students connect what they learn in the classroom to real-world innovations. Our hope is that this experience plants the seed for future careers in STEM and beyond, while also making advanced technology approachable and exciting for all.

“KEDC is proud to be at the forefront of educational innovation and can't wait to bring this unforgettable experience to your school district. Let's empower our students to not just learn about the future - but be a part of building it.”

- Nancy Hutchinson, KEDC CEO

